

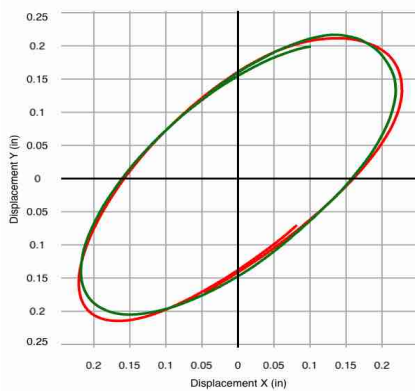
# ShakerWatch Vibration Test Report

## Orbit Test

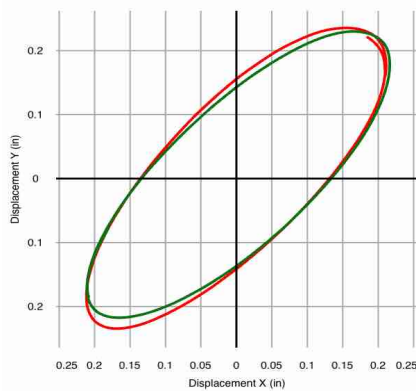
### Test Information

Operator:	Mike Steward	Date:	12/20/2022 05:54:40
Customer:	Nature Mine Texas	Media Type – Top:	Rock 736
Machine Size:	6x20 KPI	Media Type – Middle:	Rock 736
Machine S/N:	HDBUD6547	Media Type- Bottom:	Rock 736
Industry:	Coal Mine	Spring Height – Discharge Right (in):	0.0
Hand of Drive:	TBD	Spring Height – Discharge Left (in):	8.75
Expected RPM:	825	Spring Height – Feed Right (in):	8.62
Expected Stroke (in):	0.5	Spring Height – Feed Left (in):	8.75

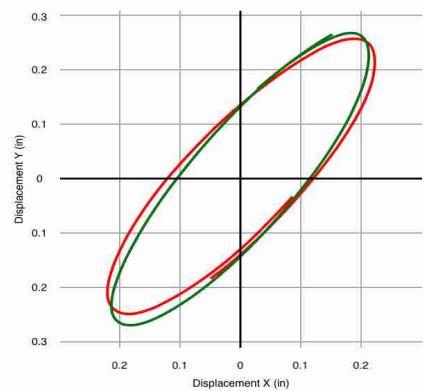
### Orbit Test (Red: Left, Green: Right)



Feed



Mid



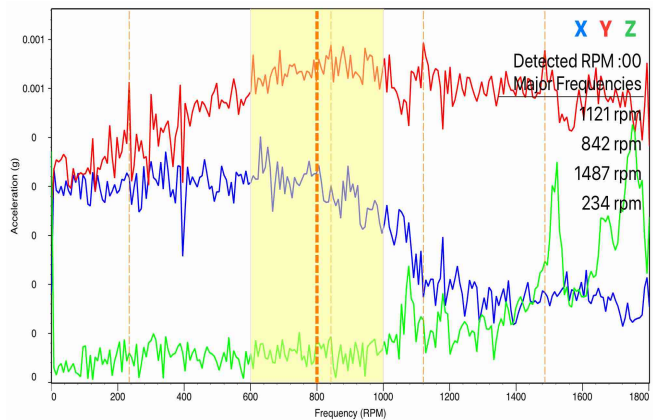
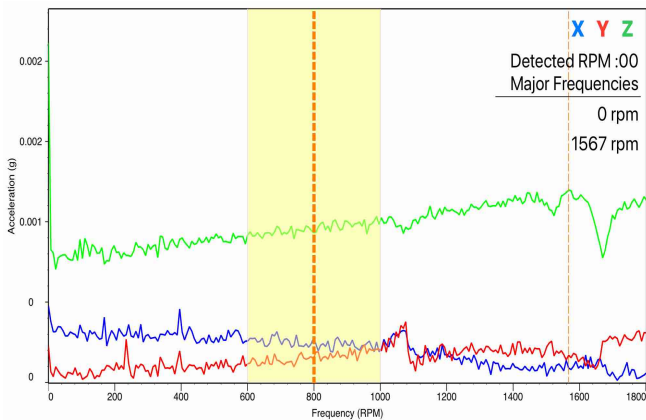
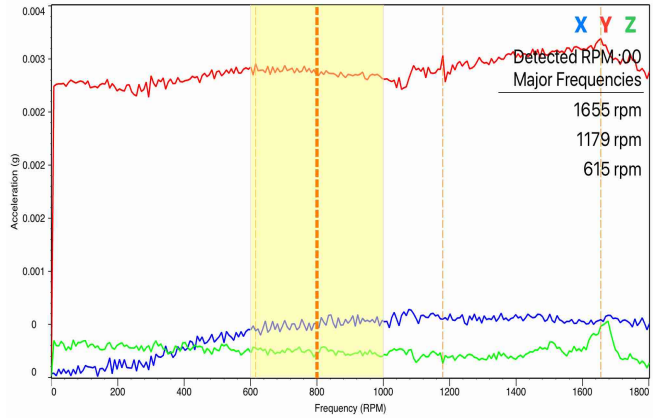
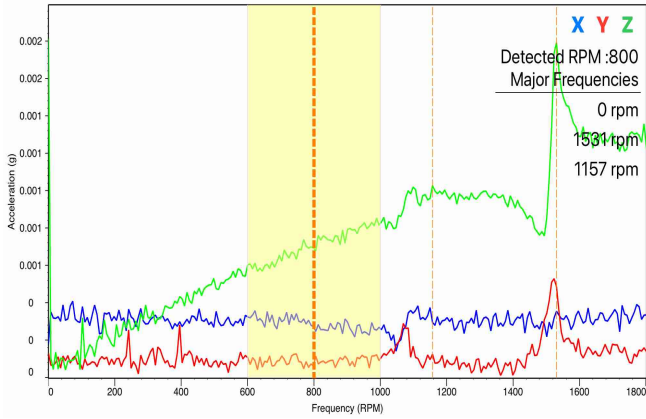
Discharge

	Feed		Mid		Discharge	
	Left	Right	Left	Right	Left	Right
Peak G:	5.63	5.27	5.77	5.68	6.40	6.51
Angle:	45 deg	43 deg	48 deg	47 deg	50 deg	54 deg
Stroke:	0.59 in	0.55 in	0.60 in	0.59 in	0.67 in	0.68 in
g (0-P) X:	4.26	4.15	4.02	4.04	4.24	4.03
g (0-P) Y:	4.13	3.86	4.46	4.22	4.81	5.18
g (0-P) Z:	0.34	0.33	0.28	0.20	0.38	0.46
Detected RPM:	820	820	820	820	820	820
Displacement (P-P) X:	0.446 in	0.434 in	0.421 in	0.422 in	0.444 in	0.422 in
Displacement (P-P) Y:	0.433 in	0.404 in	0.467 in	0.441 in	0.503 in	0.542 in
Displacement (P-P) Z:	0.036 in	0.035 in	0.029 in	0.021 in	0.040 in	0.048 in

# ShakerWatch Vibration Test Report

## Bump Test

Running RPM: 800 RPM  
 Safe Band Setting for RPM : 200 RPM



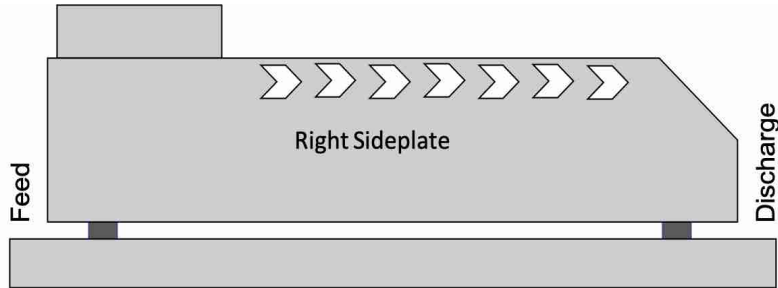
Bump Test 5

Bump Test 6

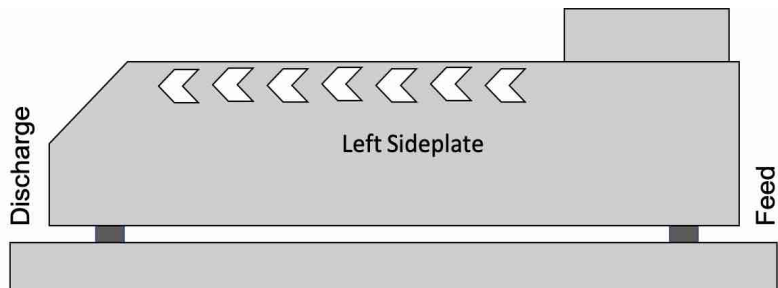
# ShakerWatch Vibration Test Report

## Side Plate Displacement Test

Displacement Threshold: 0.050 in



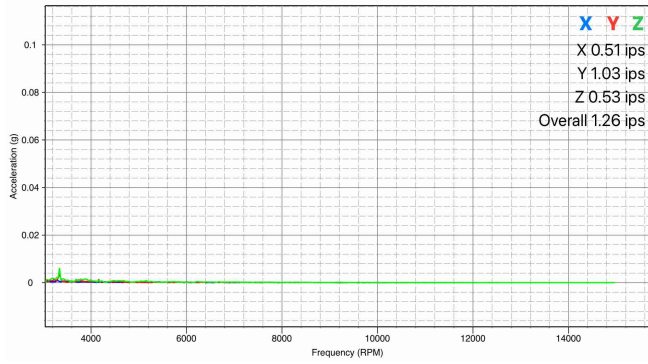
Feed Top	Mid Top	Discharge Top
0.042 in	0.026 in	0.039 in
Right Sideplate		
0.089 in	0.000 in	0.044 in
Feed Bottom	Mid Bottom	Discharge Bottom



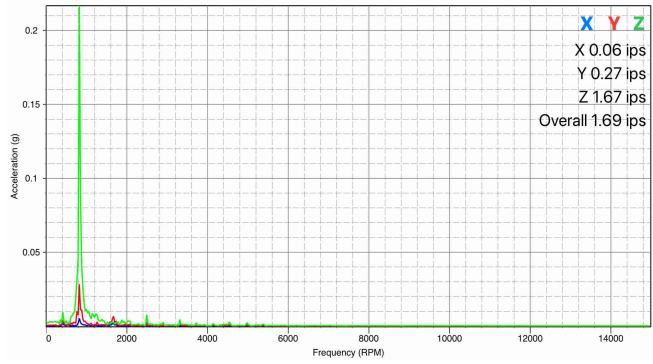
Discharge Top	Mid Top	Feed Top
0.027 in	0.038 in	0.060 in
Left Sideplate		
0.037 in	0.000 in	0.117 in
Discharge Bottom	Mid Bottom	Feed Bottom

# ShakerWatch Vibration Test Report

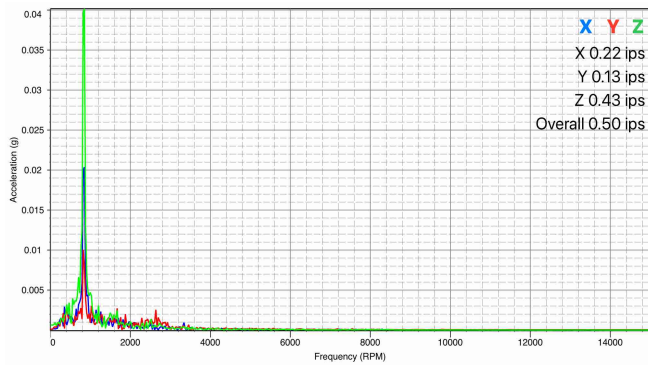
## Support Structure Movement Test



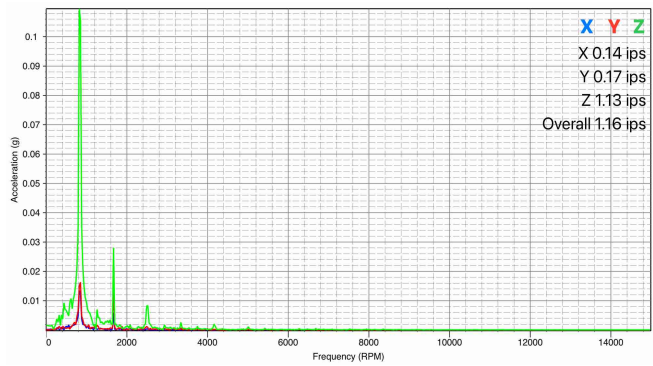
Feed Right



Feed Left



Discharge Right



Discharge Left

# Shaker Vibration Test Report

## Photos and Notes: Side Displacement Movement Test



Side Displacement DE LH  
10/20/2022 10:19:50



Side Displacement LH CTR  
10/20/2022 10:21:10



Side Displacement RH CTR  
10/20/2022 10:23:42

# Shaker Vibration Test Report

## Photos and Notes: Support Structure Test



Structure Test RH FE  
10/20/2022 10:25:43



Side displacement test  
01/17/2023 23:02:18