

Wireless 2-Axis Precision Digital Level



Digi-Pas DWL-1500XY is a Bluetooth enabled dual-axis precision digital level. Its high resolution (0.001") and high accuracy ($\pm 0.002^\circ$ for 0 to $\pm 0.5^\circ$ and $\pm 0.004^\circ$ for other angles) measuring capability qualifies it for majority of entry level industrial applications. Additionally with its built-in Bluetooth Low Energy feature, user can easily read and capture leveling readings on the screen of an iOS/Android smart device or a Windows PC while adjusting machine's orientation.



Features

- High resolution & high accuracy measurement
- Bluetooth Low Energy Technology
- Multiple platform support (iOS, Android, PC)
- Real-time and continuous reading



Bluetooth Low Energy



Multi-platform software capability



Multi-gage capability



Continuous recording and plotting



Data saving

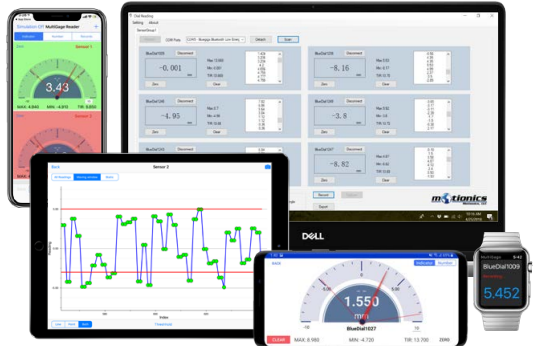


DigiPas Level	Specification
Measurement Range	0 - $\pm 2^\circ$
Resolution	0.001"
Accuracy	$\pm 0.002^\circ$ (0-0.5 $^\circ$), $\pm 0.004^\circ$ (other angles)
Measurement Speed	≤ 5 sec
Transmission Range	15 m
Dimensions	6 x 2 x 1.5 in
Working Temperature	-10 - 50 $^\circ\text{C}$
Battery	2x AA



More Features with our FREE Apps/Software*

- Multiple devices simultaneous reading
- Data plot on iPhone/iPad/Android
- Continuous or single data point recording
- Max, Min, TIR measurement
- Remote zeroing from the app
- GO/NG judgment with green/red color indication
- Real-time cloud data streaming worldwide
- Custom formula calculator
- Large analog probe meter with adjustable range
- Data saving in local database
- Data export in CSV via email and cloud drives
- Keyboard entry to Excel or SPC software on PC
- Apple Watch support



Availability of features varies between apps/platforms.