

Bluetooth Digital Protractor

BPRO



Motionics BPRO Bluetooth Digital Protractor is an economic digital protractor with built-in Bluetooth Low Energy technology. It covers a whole 360° (4x90°) range with 0.05° resolution and 0.2° accuracy. Thanks to its wireless data transmission feature, protractor readings can be easily read out in real time on the screen of a smartphone/tablet/Windows PC remotely and from any angle.

BPRO comes in two form factors, as a cube or as a torpedo level, for different applications. Strong magnets on the solid military grade alloy body allow the user to easily attach the protractor to any steel surface for measurement.

Features

- 360° (4x90°) reading range
- Bluetooth Low Energy Technology
- Multiple platform support (iOS, Android, PC)
- Large reading on smart device/PC screen, no more viewing angle issues
- Rechargeable battery



Bluetooth Low Energy



Rechargeable



Full 360° measurement



Multi-gage capability



Continuous recording and plotting



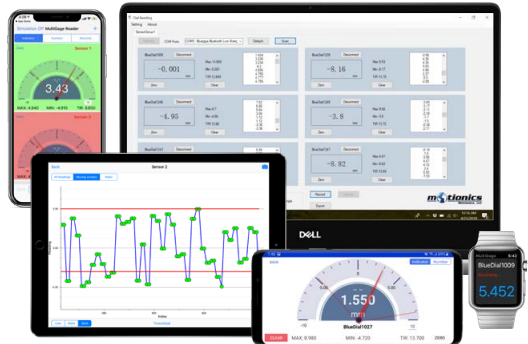
Data saving



Angle Sensor	BPRO-S	BPRO-L
Measurement Range	360° (90° x 4)	
Resolution	0.05°	
Accuracy	0.2°	
Repeatability	0.1°	
Wireless Data Rate	10 Hz	
Transmission Range	20 m (indoors)/30 m (outdoors)	
Dimensions	2.13 x 2.13 x 0.91 in	6 x 2.4 x 1.2 in
Working Temperature	0-50°C	
Battery	400 mAh	
Battery Life	30 hrs	
Charging	5 VDC USB	

More Features with our FREE Apps/Software*

- Multiple devices simultaneous reading
- Data plot on iPhone/iPad/Android
- Continuous or single data point recording
- Max, Min, TIR measurement
- Remote zeroing from the app
- GO/NG judgment with green/red color indication
- Real-time cloud data streaming worldwide
- Custom formula calculator
- Large analog probe meter with adjustable range
- Data saving in local database
- Data export in CSV via email and cloud drives
- Keyboard entry to Excel or SPC software on PC
- Apple Watch support



Availability of features varies between apps/platforms.