

WLRF

Wireless Laser Rangefinder



Wireless Laser Rangefinder (WLRF) is capable of quickly and accurately identifying the distance to a target up to 200 m away. With a built-in Bluetooth Low Energy transmitter, laser measurement readings can be wirelessly viewed and collected on iPhone, iPad, Android and Windows devices.

There is an inclinometer embedded inside WLRF to monitor device tilt angle simultaneously with laser distance measurement, facilitating applications that require intersection scanning.

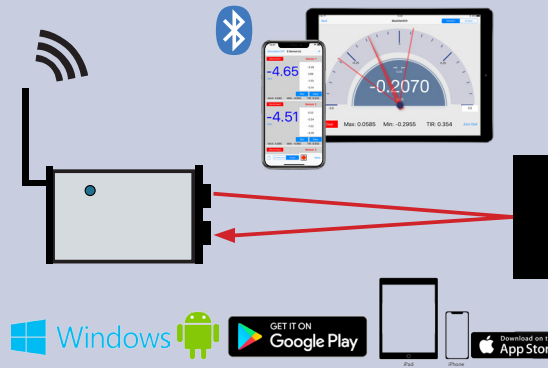
WLRF has a standard 1/4-20 thread mounting hole to allow the user to easily mount the device on a common tripod for quick and steady setup.

Features:

- Built-in Bluetooth Low Energy technology
- Power supply, signal conditioning and data transmission all in one
- 100% cable free
- Rechargeable battery



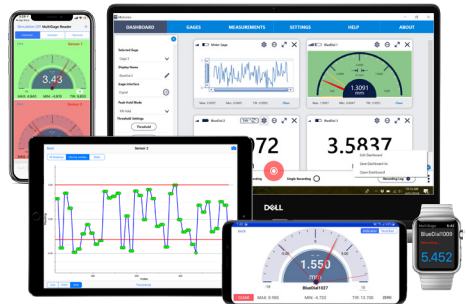
 Bluetooth Low Energy	 Rechargeable	 Long-range laser measurement	 Multi-platform software capability	 Multi-gage capability	 Continuous recording and plotting
---	---	---	---	--	--



WLRF	Specification
Measurement Range	0.2 to 125 m (18% reflectivity); 0.2 to 200m (80% reflectivity)
Resolution	1 cm
Accuracy	10 cm
Laser Class	Class 1
Wireless Data Rate	10 Hz
Transmission Range	20 m (indoors)/30 m (outdoors)
Working Temperature	0 - 50 °C
Rechargeable Battery	3200 mAh
Battery Life	30 hrs
Dimensions	120 x 78 x 43 mm
Weight	300g

More Features with our FREE Apps/Software*

- Simultaneous reading of multiple devices
- Data plot on iPhone/iPad
- Continuous or Single data recording
- Max, Min, TIR measurement
- Reading remote zero in the app
- Real-time cloud data streaming to worldwide
- Custom formula calculator
- Probe meter with adjustable range
- Measurement voice read in 9 languages
- Data export in CSV via Email and cloud drives



*Availability of features varies between apps/platforms.

