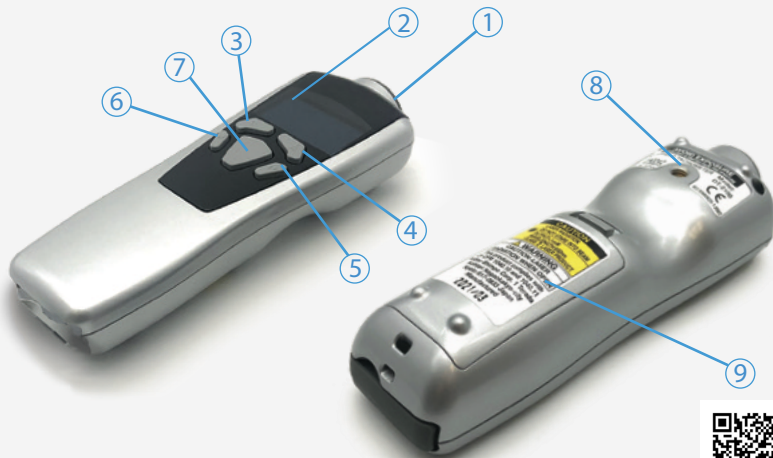


⚠ Important Notes

- Do **NOT** look into the laser beam.
- Do **NOT** point the laser beam at people.
- Do **NOT** allow children to use the device.
- Do **NOT** allow the laser irradiation port to come in contact with a rotating body.
- Do **NOT** measure using wet or oily hands, or while wearing loosely fitting clothing.

Description

- ① **Laser Irradiation Port** – source from which the laser is projected
- ② **Display Screen** – displays the measurement value
- ③ **Operation Key 1** – select item
- ④ **Operation Key 2** – configure settings, select item
- ⑤ **Operation Key 3** – switch measurement display, enter key
- ⑥ **Operation Key 4** – return measurement display to normal, cancel key
- ⑦ **Power/Measurement Key** – turn power on (will turn off automatically)
- ⑧ **Mounting Adapter** – allows unit to be mounted on tripod (thread size 1/4-20)
- ⑨ **Battery Compartment** – insert AA batteries



Included in the box

- BlueTak Tachometer 1x
- Carrying Case 1X
- AA Batteries 2X
- Contacts (Convex 1X, Concave 2X)
- Contact Adapter 1X
- Speed Measurement Wheel 1X
- Reflective Tape 1X
- User Guide 1X

Compatible Software

- iOS: MultiGage Reader (download for FREE from the App Store)
- Android: MultiGage Reader (download for FREE from the Play Store)
- Windows: MultiGage Reader (BLE dongle required, download for FREE from www.motionics.com Go to Resources > Download > Software)



MultiGage Reader App
iPhone/iPad

MultiGage Reader APP
Android



Quick Start

- Install 2x AA batteries in the battery compartment.
- Press the Power/Measurement Key to turn on the tachometer.
- Plug in the USB Bluetooth dongle if using Windows.
- Run the software, then tap Scan/+ button to enter the pairing page.
- Wait for the software to finish scanning nearby devices, then select BlueTakXXXX to connect.
- Connection may take a few seconds. Once paired, BlueTak readings show in the software.
- Apply the reflective tape to the object to be measured.
- Point the laser irradiation port to the reflective tape, keeping a distance of 50 to 4000 mm.
- Press the Power/Measurement Key to start measurement.
- BlueTak will automatically power off when no operation has been performed for a certain period of time (interval can be set in "Auto off" in the device system settings).