

BLUEPSI WIRELESS PRESSURE SENSOR

BluePSI is a wireless pressure sensor used for measurement of liquid or gas pressure. These Bluetooth-enabled pressure sensors, with the help of our free software, allow you to continuously monitor pressure in multiple locations simultaneously on your iOS, Android, or Windows device.

BluePSI has high accuracy ($\pm 0.25\%FS$), has a long battery life (up to 2 years with a coin battery) and is IP67 rated for high resistance to water and dust exposure. Most importantly, it eliminates the need for hard wiring and manual data logging thanks to its Bluetooth Low Energy wireless connectivity.



With our app/software on iOS/Android smart devices and Windows PCs, users can continuously monitor pressure conditions at multiple locations at once.

Along with streaming real-time readings, BP2-XXX-02 logs data internally. Users can simply start data logging on the device and come back later to fetch data logged in onboard memory all at once in a batch.

The data logging feature provides a solution for use cases where it's inconvenient to leave a receiving smart device or PC, or it's difficult to maintain a connection throughout the data collection session.

BluePSI transducers are ideal for safe and efficient pressure measurement for pumps, compressors, hydraulic presses, machinery, excavators, pneumatic equipment and motors in harsh environments.



										
Bluetooth Low Energy	Long battery life	IP Rating IP67	Replacable coin battery	Temperature sensor	Onboard data logger	Multi-platform software capability	Multi-gage capability	Continuous recording and plotting	Data saving	Remote cloud monitoring

- Long battery life - up to 2 years with a standard coin battery
- IP67 harsh environment proof
- High-accuracy reading $\pm 0.25\% FS$
- Multiple sensor reading capability
- Data logging and real-time reading
- Temperature reading and recording
- Remote monitoring through cloud gateway connection
- Cross-platform compatibility (iOS, Android, Windows)



SPECIFICATIONS

Pressure Measurement Range	50-15,000 PSI
Pressure Accuracy	±0.25% FS
Proof Pressure	2x msmt range
Burst Pressure	5x msmt range
Temperature Measurement Range	32 to 131°F / 0 to 55°C
Temperature Accuracy	±5.4°F / ±3°C
Transmission Range	Up to 66ft / 20m
Wireless Data Rate	Adjustable up to 10 samples/sec
Real-Time Readings	Yes
On-Board Data Logging	Yes (Available for BP2-XXX-02)*
Weatherproof Rating	IP67
Working Temperature	-4 to 185°F / -20 to 85 °C
Battery Life	2 years at 5 second interval w/CR2050
Battery Type	CR2050/CR2032
Pressure Port	¼-18NPT

*XXX is a placeholder for pressure measurement range. For example, BluePSI with a pressure range of 100 PSI and data logging would be model BP2-100-02.

DATA LOGGING SPECIFICATIONS

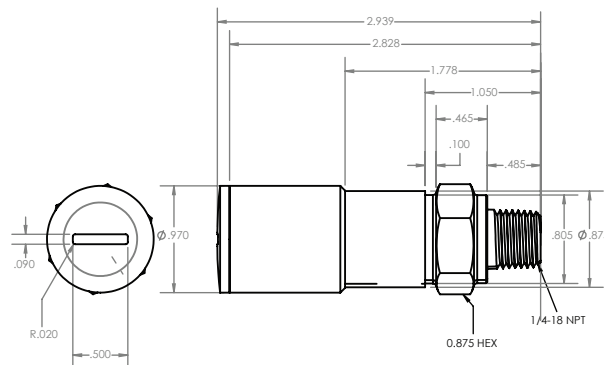
Along with streaming real-time readings, BP2-XXX-02 models of BluePSI log data internally. Users can simply start data logging on the device and come back later to fetch data logged in onboard memory all at once in a batch. You can switch between modes in the software.

Recording Mode	First in first out (FIFO)* OR Fill until full**
Data Logging Rate	10Hz - 1 sample/hour (100ms to 60min interval)
# of Data Logs	16,384 (Pressure only) 8,192 (Pressure & Temperature)

*When the memory is full, the earliest reading will be removed, and the latest reading will be added to the end.

**When the memory is full, data logging stops automatically.

DIMENSIONS




Given dimensions are in inches.

SOFTWARE DETAILS

FEATURES

- Simultaneous reading of multiple devices
- Live data plotting
- Continuous or single data recording
- Max, Min, TIR measurement
- Remote zeroing from the app
- Real-time cloud data streaming worldwide
- Custom formula calculator
- Large analog probe meter with adjustable range
- Measurement voice read in 9 languages
- Data export in CSV via email and cloud drives
- Keyboard entry to Excel or SPC software on PC
- Can be used with Motionics IoT web platform
- Remote monitoring capabilities
- Customizable dashboard on PC

COMPATIBLE PLATFORMS



iOS Android Windows

MAXIMUM CONNECTIONS

iOS	14 sensors
Android	8 sensors
Windows	8 sensors per dongle (multiple dongles allowed)



CLOUD INTEGRATION

Not only can you connect to the devices wirelessly through Bluetooth within the transmission range, but you can also use our cloud gateway to monitor pressure readings from anywhere. On our browser-based IoT platform, MultiGage Cloud, you can view current and past readings from pressure sensors anywhere with an internet. You can also set notifications to alert a sensor disconnection, low battery, or out of a set threshold.



MultiGage Cloud allows you to create custom dashboards by placing widgets to display information from connected sensors. Readings can be viewed in an analog gauge display, digital display, and a live plot. You can view active sensors and gateways, and check reading history for pressure sensors.

Max Sensor Connections per gateway	10+
Max Gateway Connections	No limit
Max Receiving Device Connections	No limit

AVAILABLE MODELS - PRODUCT SLECTION GUIDE

Product ID – Ordering Information

BP2	XXX	YY	ZZ
Model	Pressure Range	On-board Data Logging	USB BLE Dongle Receiver for Windows*
	050 : 50 PSI	01 : Real-Time Reading Only	PC : With PC USB BLE Dongle
	100 : 100 PSI	02 : Real-Time Reading and On-board Data Logging	Blank : Without Dongle
	500 : 500 PSI		
	01K : 1000 PSI		
	05K : 5000 PSI		
	10K : 10000 PSI		
	15K : 15000 PSI		

*USB BLE dongle is only needed for Windows use. For iOS and Android use this dongle is not needed.

Example:

- BP2-10K-02-PC Bluetooth Pressure Sensor with 10000 PSI range, with real-time reading, with on-board data logging, with PC USB BLE dongle
- BP2-100-01 Bluetooth Pressure Sensor with 100 PSI range, with real-time reading, without on-board data logging, without PC USB BLE dongle