

Rotor Balancing Report

Date / Time: May 02, 2012 10:58:52 AM

Staff Name: Tom

Location: Manchester

Machine ID: GTI002

Vibration units in: ips

Balancing RPM: 11944.00

Rotor Weight (Kg): 6.00

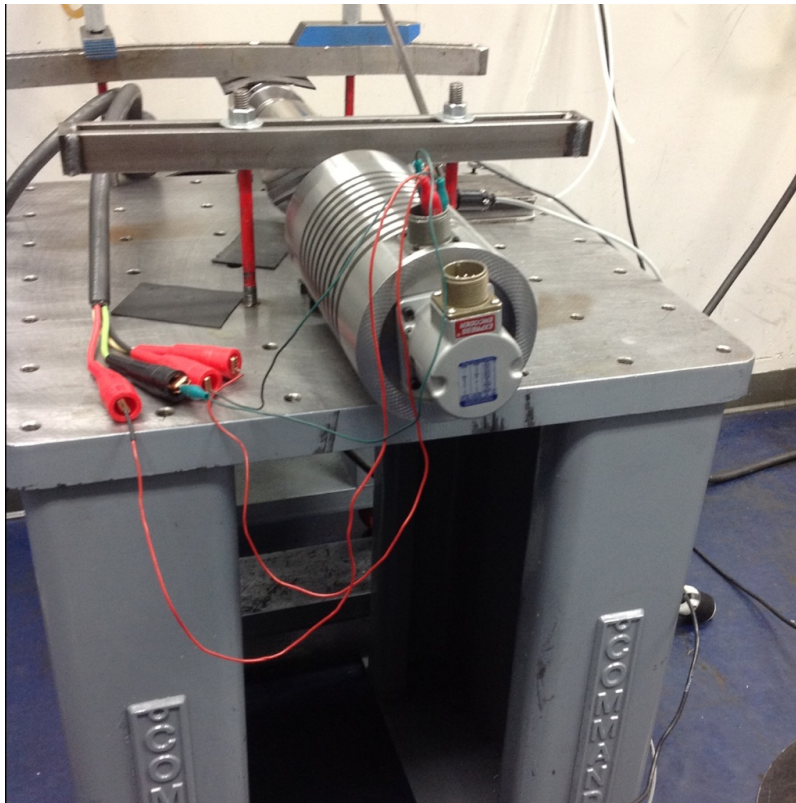
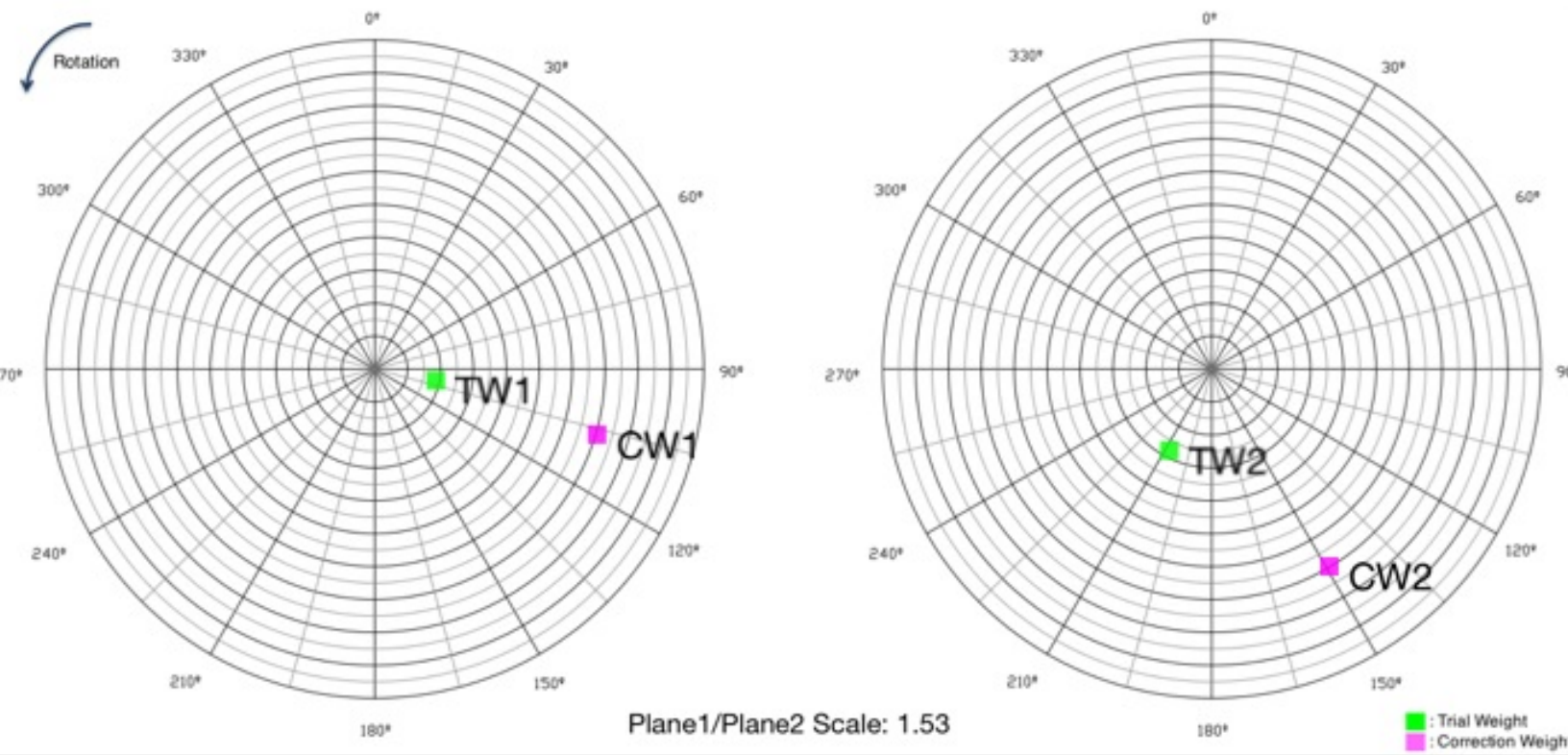
	Plane 1		Plane 2	
	Magnitude	Angle	Magnitude	Angle
Original Vibration:	0.0445	102°	0.0339	207°
Trial Weight (gr):	0.0100	102°	0.0100	207°
Trial Weight Radius (mm):	1.0000		1.0000	
Vibration w/Trial Weight:	0.0244	104°	0.0494	86°
Correction Weight (gr):	0.0400	107°	0.0200	149°
Correction Weight Radius (mm):	1.0000		1.0000	
Final Vibration:	0.0112	51°	0.0231	250°

Notes

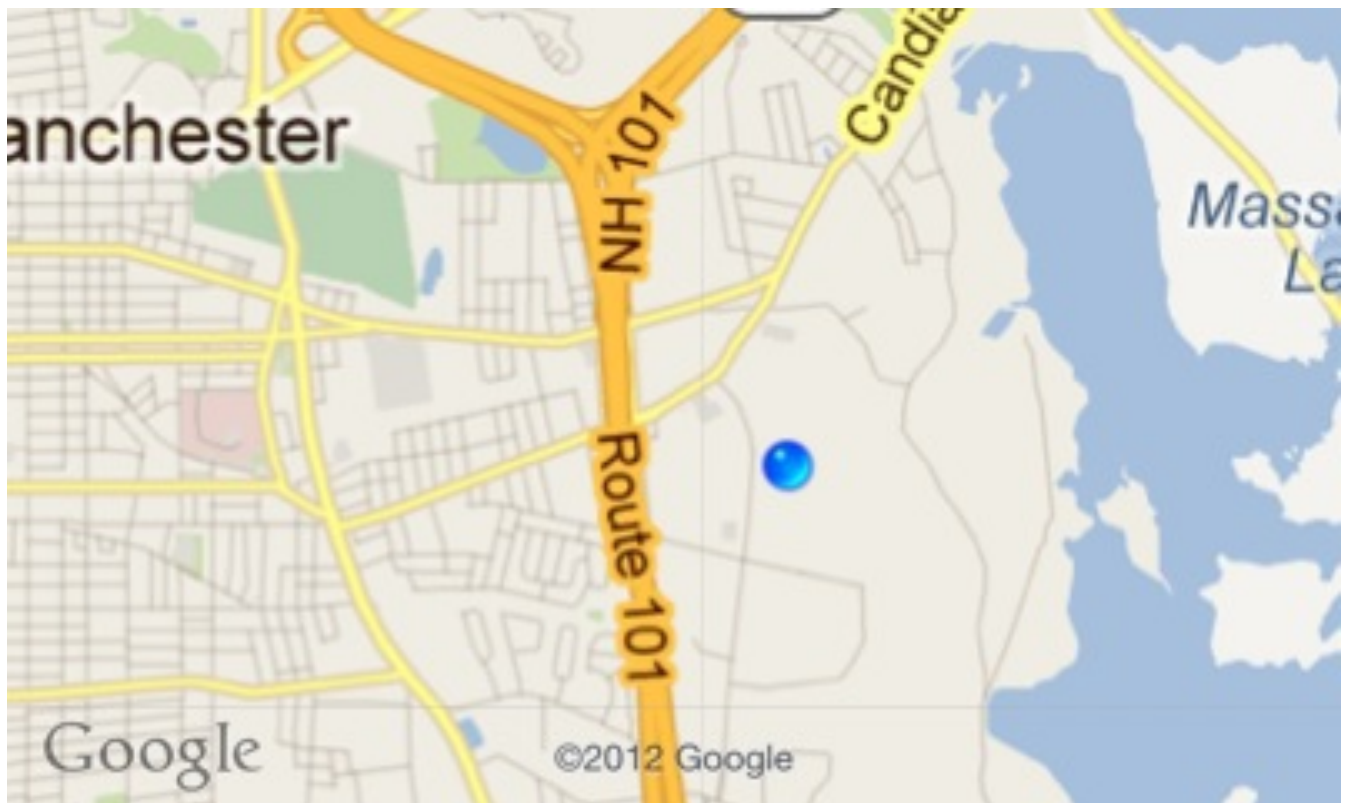
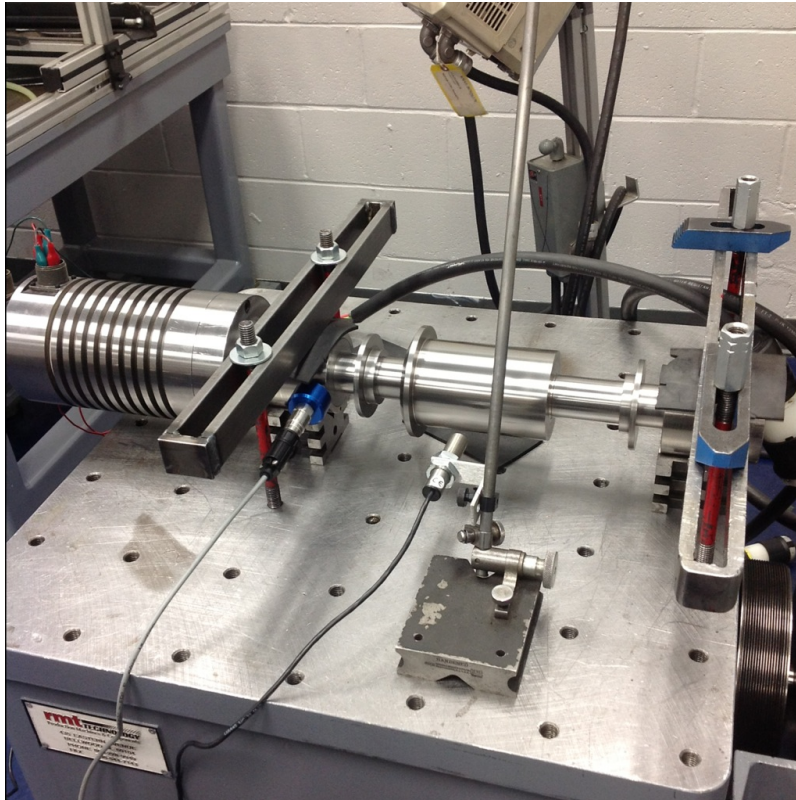
Schick GTI new spindle



Rotor Balancing Report - Attachments



Rotor Balancing Report - Attachments



Plant Location