

Rotor Balancing Report

Date / Time: **apr. 24, 2012 10:23:42 AM**

Staff Name: **W.Mudde**

Location:

Machine ID:

Vibration units in: **ips**

Balancing RPM: **1800.0000**

Rotor Weight (Kg): **0.0000**

Original Vibration: 0.1002

Trial Weight (gr): **2.0000**

Trial Weight Radius (cms): **7.0000**

Vibration with Trial @ 0: **0.2060**

Vibration with Trial @ 120: **0.0353**

Vibration with Trial @ 240: **0.1855**

Correction Weight (gr): **1.5928**

Correction Weight Radius (cms): **7.0000**

Correction Weight Angle: **130.5895**

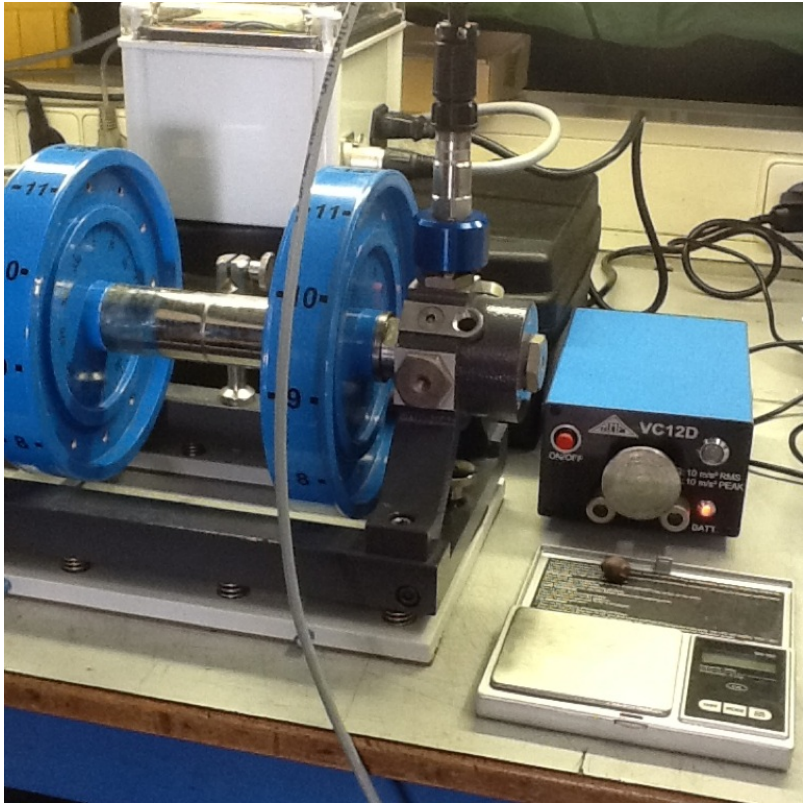
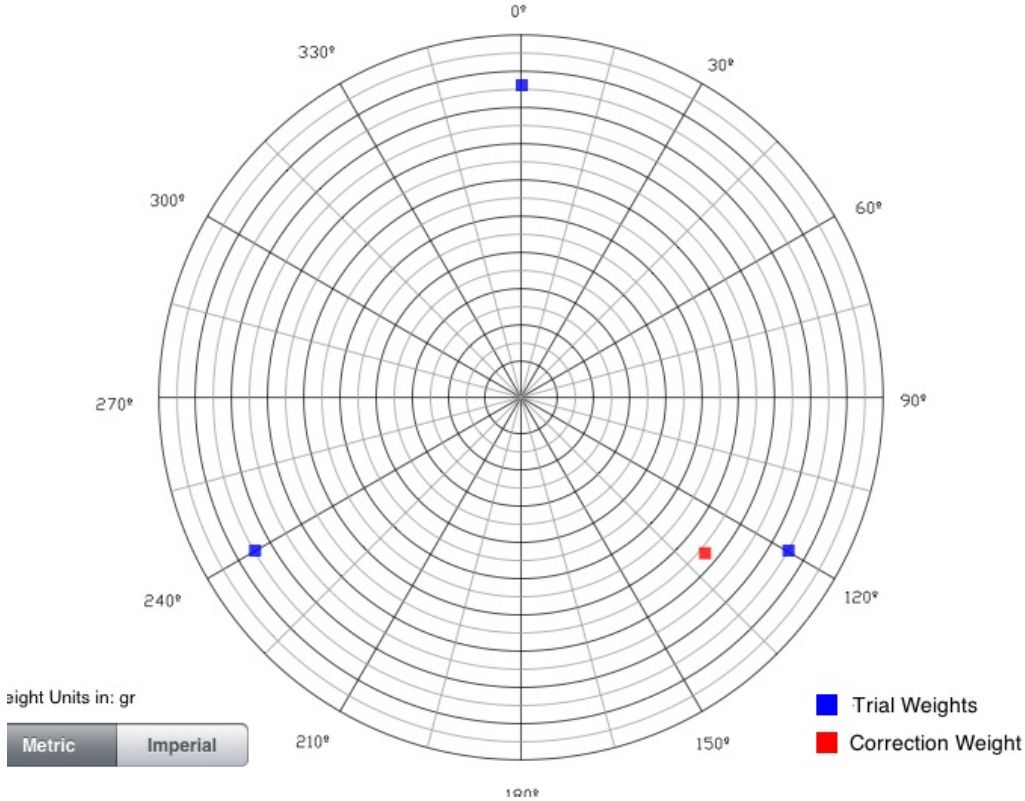
Vibration with Correction Weight: 0.0027

Notes

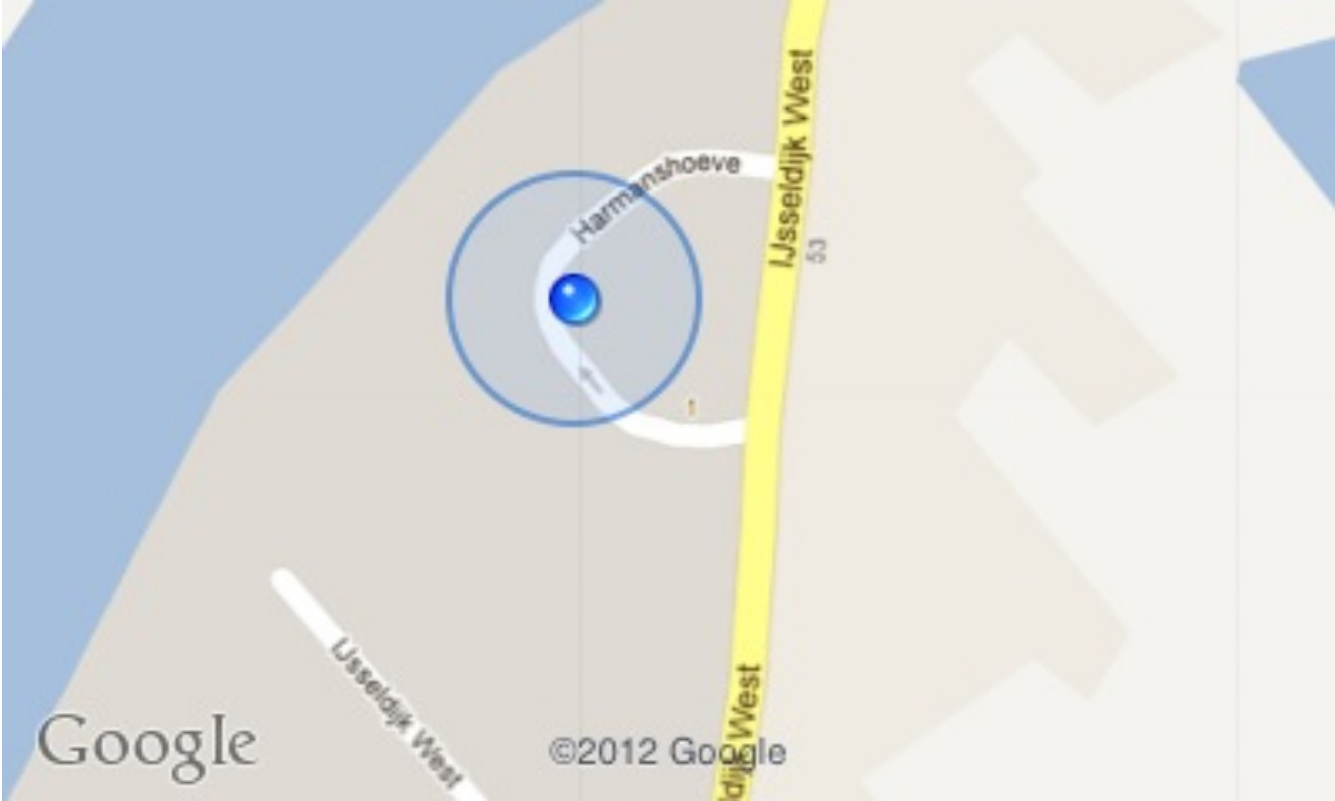
Test



Rotor Balancing Report - Attachments



Rotor Balancing Report - Attachments



Plant Location