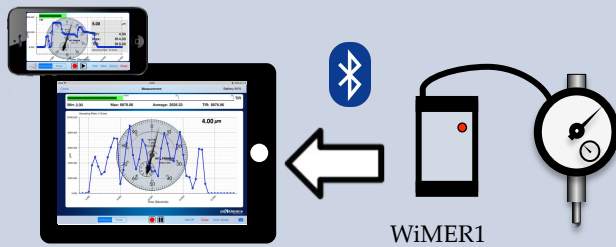


WiMER1 is a wireless measurement device connecting to Mitutoyo instruments. It reads digital micrometer/dial/caliper and communicates wirelessly with iPhone/iPad/Android/PC via Bluetooth Low Energy, allowing user to view measurement readings directly on the screen of smart devices.

## Key Features

- Dimension: 2.50 x 1.63 x 0.80 in
- Resolution: 0.001 mm (depending on the instrument)
- Range: 12.7 mm (depending on the instrument)
- Sampling Frequency: 10 Hz
- Wireless Working Range: 10 m (line of sight)
- Working Temperature: 0-50 °C
- Battery: 400 mAh rechargeable
- Charging: 5 VDC USB and 110 VAC



## Applications

- Crankshaft Deflection Test
- Rotor Runout Test
- Bore Measurement
- Surface Profile Test

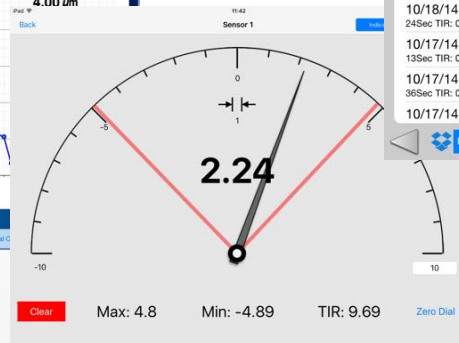
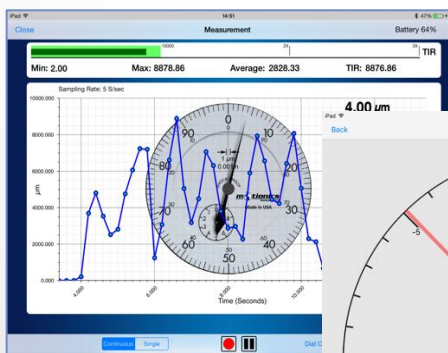
## Compatible with Mitutoyo instruments with SPC output:

- Dial indicator 543
- Caliper 500, 551, 552, 573
- MicroMeter 227, 293, 314, 317, 323...
- More

## Apps Features:

- Free engineering Apps/Software
- Multiple devices simultaneous reading
- Display acquired data in real-time graph
- Continuous or Single Measurement recordings
- Analog rotating dial indicator on screen
- Probe meter with adjustable range
- Pinch, Pan, Max, Min, Average

- TIR (total indicator reading) & threshold/indicator
- Multiple sampling rate options
- Off-line post processing plot and polar plot
- Record data, CSV and SQLite database
- Export via email and Dropbox synchronization
- Quick custom PDF report with results, graphs, image, logo, signature, map and GPS location



List of Measurements	Recordings
10/20/14 10:16 Imbal... 17Sec TIR: 607.000	3.000 μm 0.100 Seconds
10/20/14 10:15 Imbal... 6Samples TIR: 669.000	3.000 μm 0.200 Seconds
10/18/14 11:18 24Sec TIR: 0.060	3.000 μm 0.300 Seconds
10/17/14 11:04 13Sec TIR: 0.060	3.000 μm 0.400 Seconds
10/17/14 11:00 36Sec TIR: 0.060	3.000 μm 0.500 Seconds
10/17/14 09:33	3.000 μm

