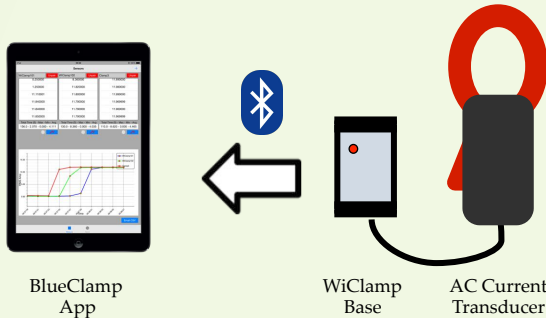


Wireless current measurement kit consists of an AC current transducer and the WiClamp base. It is able to measure the TRUE RMS value of current in a cable and transmit measurement results wirelessly via Bluetooth Low Energy.

Our free iPad App BlueClamp can simultaneously receive and display data from multiple WiClamp bases, turning the iPad into a multi-line current monitoring device.

This kit also includes a USB charging cable and a 110 VAC USB adapter.



Specifications

- WiClamp Base Dimension: 60 x 36 x 15 mm
- Transducer Dimension: 64 x 143 x 30 mm
- Measurement Range: 1-115 A RMS (10 mV/A), 1-400 A RMS (1 mV/A)
- Resolution: 0.3A (10 mV/A), 3A (1 mV/A)
- Working Voltage: 600 V CAT II
- Wireless Working Range: up to 10 m
- Operating Temperature: 0-50 °C
- Battery: 350 mAh rechargeable
- Charging: 5 VDC USB

BlueClamp App Features (iPad)

- Available now on the App Store for free
- Multiple clamp connectivity up to 3 devices (can be upgraded to 10 devices on request)
- Real time readings in both tables and plots
- Max, Min, Average
- Individual clamp adding/removing during measurement
- Individual plot control of each clamp
- Individual clamp calibration and preference setting
- Simulation mode for demonstration
- Multiple sampling frequency: 2, 30, 60 seconds/sample
- Pause/Resume during measurement
- Data export in CSV file
- Custom PDF report generation
- Add company logo and machine image in report
- Auto populate test date and test results in report
- User signature and custom note
- Facility location/map in report
- PDF report wireless printing and email export

To place an order, visit store.motionics.com

